

Raritan PX4 Rack PDU



Thank you for purchasing the Raritan PX4 intelligent rack power distribution unit (PDU).

This Quick Setup Guide explains how to install and configure the PX4. For more, access online help from the web interface or go to Raritan's [Support page](#).

Package Contents

- PX4 Rack PDU
- 2 mounting buttons
- 2 sliding brackets

If any pieces are missing or damaged, report this to Raritan Technical Support, or contact the Raritan partner where you purchased the product.

Before You Begin

1. Prepare the installation site. Make sure the installation area is clean and not exposed to extreme temperatures or humidity. Allow sufficient space around the device for cabling and outlet connections. Safety instructions are provided in the PX4 online help.

Fill out the Equipment Setup Worksheet found in the online help. Record the model, serial number, and use of each IT device connected to the PDU's power outlets.

Safety Precautions

WARNING! Before installing or operating this product, read and understand all sections in this guide. Failure to heed any of the following **WARNINGS** may result in electric shock, fire, personal injury and death. Prior to operating this product, the user should read the online help and specifically the warnings in the online help.

WARNING! Connect this product to an AC power source with a voltage that is within the range specified on the product's nameplate.

WARNING! Connect this product to an AC power source that is current limited by a suitably rated fuse or circuit breaker in accordance with national and local electrical codes.

WARNING! Use this product in a dry location.

WARNING! Connect this product to a protective earth ground. Never use a "ground lift adaptor" between the product's plug and the wall receptacle.

WARNING! If this product is a model that requires the assembly of the line cord or plug, the assembly must be performed by a licensed electrician, and the line cord or plugs used must be rated based on the product's nameplate ratings, as well as national and local electrical codes.

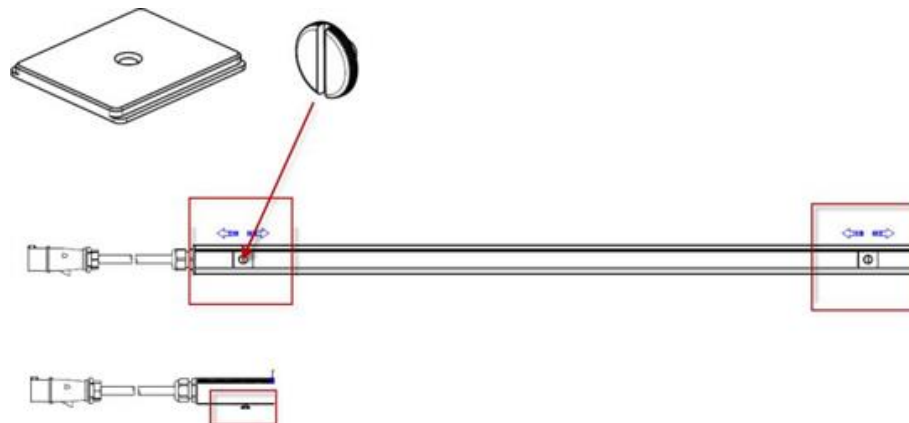
Mounting the PX4

Circuit Breaker Orientation Limitation

Usually a PDU can be mounted in any orientation. However, when mounting a PDU with circuit breakers, you must follow these rules:

- Circuit breakers **CANNOT** face down. For example, do not horizontally mount a Zero U PDU with circuit breakers facing up or down.

0U Button Mount



- | | |
|--|---|
| <p>Part Numbers:</p> <ul style="list-style-type: none"> • 250-70-0140-00: button (2) • 250-70-0141-00: bracket (2) | <ul style="list-style-type: none"> • Slide flat brackets onto rear of OU model and align over holes at each end. • Press button into bracket hole and turn with finger. • Mount by positioning the PDU at the rack, then pressing the buttons through the holes in the cabinet and letting the PDU drop down slightly. |
|--|---|

iX9 Controller



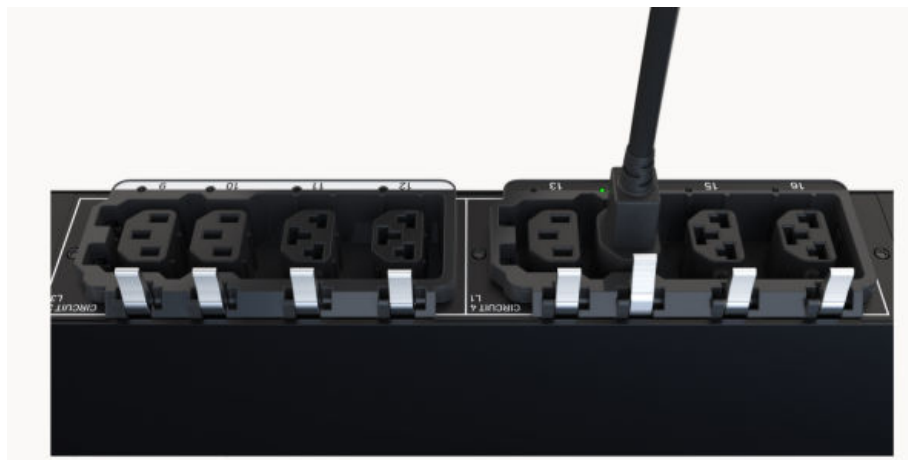
► Interface (External):

- 2x 10/100/1000 Ethernet
- 1x USB 2.0 type B (Device)
- 2x USB 2.0 type A (Host)
- 1x Sensor port (1-Wire + RS485)
- 1x PDU Link port

► Interface (Internal):

- 1x RS-485 bus
- 1x USB 2.0 (Host)

RamLock Plug Retention



- Plug in cords normally.
- No tools required.
- Press the lever to release the cord.

Threaded Grounding Point

The primary means of earthing the product is via the power cord connected to an earthed receptacle; however, some models have a supplementary, threaded grounding point for connection to TT earthing systems or where required by the Authority Having Jurisdiction (AHJ) per national, regional or local applicable electric codes.

Identify it via the grounding symbol:



Where required, wire this point to an electrical system to protectively ground the PX4.

Connecting the PDU to a Power Source

Do not stretch the power cord.

► *To connect a PDU to the power source:*

1. Verify that all circuit breakers on the PX4 are set to ON. If not, turn them ON.

Or make sure that all fuses are inserted and seated properly. If there are any fuse covers, ensure that they are closed.

Note: Not all models have overcurrent protectors.

2. Connect each PX4 to an appropriately rated branch circuit. Refer to the label or nameplate affixed to your PX4 for appropriate input ratings or range of ratings.
3. When a PX4 powers up, it proceeds with the power-on self test and software loading for a few moments. At this time, the outlet LEDs cycle through different colors.

Note: If a PDU beeps after being powered up, either its circuit breaker has tripped or the L-N wiring is reversed. If no circuit breakers tripped, check the wiring of the plug adapter that is used or the direction in which the plug or plug adapter is plugged into the power socket.

4. When the software has completed loading, the outlet LEDs show a steady color and the front panel display illuminates.

Connecting to Your Network

To remotely administer the PX4, you must connect it to your local area network (LAN).

Ethernet port is enabled by default. Port layouts and number of Ethernet ports vary by model.

► *To make a wired connection:*

1. Connect a standard network patch cable to one or both Ethernet ports on the PDU.
 - If one Ethernet port is higher speed, use the higher speed port for network connection.
2. Connect the other end of the cable to your LAN.

Sample iX9 controller. Port locations may vary by model.



Warning: Accidentally plugging an RS-232 RJ-45 connector into the Ethernet port can cause permanent damage(s) to the Ethernet hardware.

Default Login

- Username: admin
- Password: legrand

Choose Initial Configuration Method

Depending on your networking environment, choose the best method to initially configure your PX4.

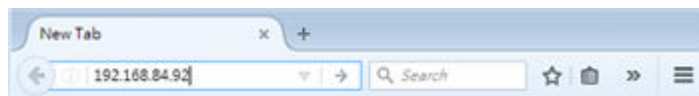
- Using a computer: [Initial Configuration in a Web Browser](#) (on page 5).
- Using a mobile device: [Initial Configuration with PDView App](#) (on page 6).
- Using the command line interface: [Initial Configuration with CLI](#) (on page 6)

Initial Configuration in a Web Browser

After connecting to a DHCP IPv4 network, an IPv4 address is automatically assigned to your PDU.

The IP address is available using the front panel display.

1. Press the X or O button to go to the Main Menu.
2. Use the arrow buttons to scroll to Device Info, then press O.
3. Use the arrow buttons to scroll through the information and view the IP address.
4. In a web browser, enter the IP address and log in with the default user credentials. If any security alert messages display, accept them.



A password change is enforced at first login.

Initial Configuration with CLI

This is a command set example for setting up ETH1 interface with static IP address, gateway, and DNS server.

```
#config
config:# network bridge enabled false
config:# network ipv4 interface ETH1 enabled true
config:# network ipv4 interface ETH1 configMethod static
config:# network ipv4 interface ETH1 address 192.168.56.80/24
config:# network ipv4 interface ETH1 gateway 192.168.56.128
config:# network dns firstServer 1.1.1.1 secondServer 1.0.0.1
config:# network ethernet Eth1 speed 100Mbps duplexMode full
config:# apply
```

Initial Configuration with PDView App

1. Install the Raritan PDView app on an iOS or Android mobile device. Android device must support USB "On-The-Go" (OTG).



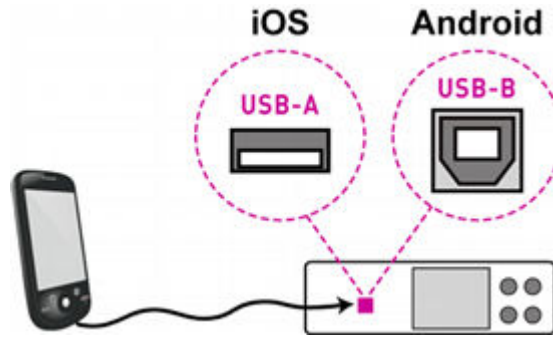
- <https://itunes.apple.com/app/raritan-pdview/id780382738>



- <https://play.google.com/store/apps/details?id=com.raritan.android.pdview>



2. Get an appropriate USB cable for your mobile device.
 - *iOS*: Use the regular USB cable shipped with your iOS mobile device.
 - *Android*: Use an USB OTG adapter cable.
3. Connect the mobile device to the appropriate USB port on the product.
 - *iOS*: USB-A port.
 - *Android*: USB-B port



4. Launch the PDView app and wait until the PDU is recognized.

Connected

5. If the factory-default login credentials remain unchanged, or if PDView has been configured with accurate login credentials, PDView automatically logs in to the web interface of PX4.

If PDView can't log in automatically, the login screen displays instead and you must enter appropriate user credentials for login.

Password change is enforced upon first login.